

## Niax™ silicone L-580

### Description

Niax silicone L-580 is a non-hydrolyzable silicone, designed to provide excellent foam stability and fine regular cell structure in extremely low density foams using liquid carbon dioxide as the blowing agent. In stretched formulations with high TDI, high water, high CO<sub>2</sub>, Niax silicone L-580 provides superior nucleating efficiency and dramatically reduces striations in the foam bun. It has full hydrolytic stability and can be used as a separate stream or in water/amine/ silicone preblends. Niax silicone L-580 offers enhanced stability while yielding foams with good breathability.

### Key Features and Benefits

- Silicone with medium efficiency
- Excellent foam stability plus good breathability in low-density formulations blown with liquid carbon dioxide
- Complete hydrolytic stability in water/amine/silicone preblends
- Works well on all commercially available CO<sub>2</sub> equipment (Cardio/Beamech/Novaflex)

### Typical Physical Properties

Form	Clear liquid
Viscosity at 25°C, cSt	600-1200
Specific Gravity, 20°C	1.02
Flash Point, Pensky-Martens Closed Cup <sup>(1)</sup> , °C	97

(1) ASTM Test Method D 93

### Formulation

The following formulation illustrates some typical foam results utilizing Niax silicone L-580 on Momentive Performance Materials CO<sub>2</sub> pilot scale machines.

#### General Screening Formulation

Component	php
Polyol (Varied)	100
CO <sub>2</sub>	3.5
Water	4.8
Niax Silicone L-580	1.4
Niax Catalyst A-1	0.08
Stannous Octoate	0.20
TDI, 80/20	Varied with polyol
TDI Index	110

### Discussion

#### Description of Momentive Performance Materials Pilot Scale Equipment

#### Beamech CO-2™

The Beamech CO-2 machine is about 1/7 scale. The machine has seven metered streams, including one for CO<sub>2</sub>. A

typical run results in the manufacture of a bun that is approximately 7.5m long, 0.6m high and slightly less than one meter in width. In principle, long pours can be made with the equipment but space limits us to less than two minutes of actual pour time.

Description of Momentive Performance Materials Pilot Scale Equipment (continued)

Hennecke NovaFlex®

The Hennecke-Krauss-Maffei Novaflex machine has 7 metered streams, including one for CO<sub>2</sub>. The Novaflex head was specially designed for laboratory usage. A typical run results in the manufacture of a bun that is approximately 1.7m long, 0.45m wide and 0.4m high. The head pressure was maintained at about 15 bars during this evaluation.

Cannon CarDio®

The Cannon CarDio CO<sub>2</sub> head designed for lab scale evaluations is mounted on a Hennecke-Krauss-Maffei machine. The machine has 7 metered streams, including one for CO<sub>2</sub>. A typical run results in the manufacture of a bun that is approximately 1.7m long, 0.45m wide and 0.4m high. The head pressure was maintained at about 13 bars during this evaluation.

Average Operating Parameters

Machine Parameter	CO-2	CarDio	NovaFlex
Polyol Temperature, °C	21	22	22
TDI Temperature, °C	20	22	22
Total Throughput, kg/min	15	15	15
Laydown Pressure, bar	17	13	15

There was, of course, some variability of operating parameters during sample production, but, in most cases, differences were quite small. The exception to this was that a significant throughput difference was required with the Beamech equipment, with the two different polyols. The higher viscosity of the 3500MW polyol required that we increase the surface area of the sinter (which controls pressure at the lay-down) because pressure was higher than desired. This pressure is the key operating parameter for froth and cell structure control at any given CO<sub>2</sub> concentration. Since surface area can only be changed in discrete increments, the resulting pressure was too low at the same throughput used for the 3000MW polyol. Therefore, it was necessary to significantly increase total throughput to maintain pressure at the desired level. The throughput with 3000MW polyol averaged 11 kg/min, while it averaged almost 19 kg/min using the 3500MW material. For the Novaflex and Cardio equipments, throughput with 3000MW polyol was 14 kg/min and 16 kg/min for the 3500MW material.

Results

All foams poured using Niax silicone L-580 on above CO<sub>2</sub> pilot scale equipments were of good quality. A fine and uniform cell structure with good density distribution was achieved with CO<sub>2</sub> Cardio and Novaflex technologies. In figures 1 and 2, Niax silicone L-580 was compared with a competitive product in a low density foam grade on a Novaflex full scale equipment. The cell structure, in this stretched formulation, was finer and more uniform than that of the competitive product.

Figure 1: Niax Silicone L-580 in Low Density Foam (1.0 pcf)

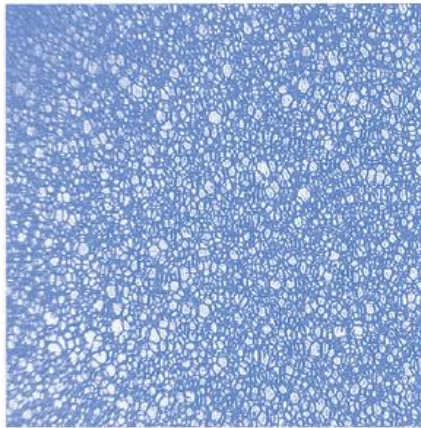
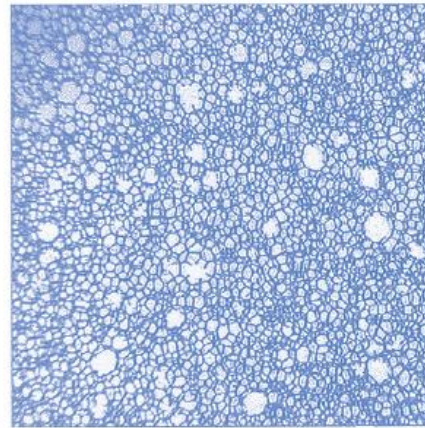


Figure 2: Competitive Product in Low Density Foam (1.0 pcf)



**Patent Status**

Standard copy to come

**Product Safety, Handling and Storage**

Standard copy to come

**Limitations**

Standard copy to come

**Contact Information**

Email

[commercial.services@momentive.com](mailto:commercial.services@momentive.com)

**Telephone**

**Americas**

+1 800 295 2392

Toll free\*

+704 805 6946

Direct Number

\*All American countries

**Latin America**

**Brazil**

+55 11 4534 9650

Direct Number

**Mexico**

+52 55 2169 7670

Direct Number

**EMEAI- Europe, Middle East, Africa & India**

**Europe**

+390510924300

Direct number

**India, Middle East & Africa**

+ 91 44 71212207

Direct number\*

**\*All Middle Eastern countries, Africa, India,**

**ASIA PACIFIC**

**China**

800 820 0202

Toll free

+86 21 3860 4892

Direct number

**Japan**

+81 3 5544 3111

Direct number

**Korea**

+82 2 6201 4600

For literature and technical assistance, visit our website at: [www.momentive.com](http://www.momentive.com)

**DISCLAIMER:**

**THE MATERIALS, PRODUCTS AND SERVICES OF MOMENTIVE PERFORMANCE MATERIALS INC. AND ITS SUBSIDIARIES AND AFFILIATES (COLLECTIVELY “SUPPLIER”), ARE SOLD SUBJECT TO SUPPLIER’S STANDARD CONDITIONS OF SALE, WHICH ARE INCLUDED IN THE APPLICABLE DISTRIBUTOR OR OTHER SALES AGREEMENT, PRINTED ON THE BACK OF ORDER ACKNOWLEDGMENTS AND INVOICES, AND AVAILABLE UPON REQUEST. ALTHOUGH ANY INFORMATION, RECOMMENDATIONS, OR ADVICE CONTAINED HEREIN IS GIVEN IN GOOD FAITH, SUPPLIER MAKES NO WARRANTY OR GUARANTEE, EXPRESS OR IMPLIED, (i) THAT THE RESULTS DESCRIBED HEREIN WILL BE OBTAINED UNDER END-USE CONDITIONS, OR (ii) AS TO THE EFFECTIVENESS OR SAFETY OF ANY DESIGN INCORPORATING ITS PRODUCTS, MATERIALS, SERVICES, RECOMMENDATIONS OR ADVICE. EXCEPT AS PROVIDED IN SUPPLIER’S STANDARD CONDITIONS OF SALE, SUPPLIER AND ITS REPRESENTATIVES SHALL IN NO EVENT BE RESPONSIBLE FOR ANY LOSS RESULTING FROM ANY USE OF ITS MATERIALS, PRODUCTS OR SERVICES DESCRIBED HEREIN.** Each user bears full responsibility for making its own determination as to the suitability of Supplier’s materials, services, recommendations, or advice for its own particular use. Each user must identify and perform all tests and analyses necessary to assure that its finished parts incorporating Supplier’s products, materials, or services will be safe and suitable for use under end-use conditions. Nothing in this or any other document, nor any oral recommendation or advice, shall be deemed to alter, vary, supersede, or waive any provision of Supplier’s standard Conditions of Sale or this Disclaimer, unless any such modification is specifically agreed to in a writing signed by Supplier. No statement contained herein concerning a possible or suggested use of any material, product, service or design is intended, or should be construed, to grant any license under any patent or other intellectual property right of Supplier covering such use or design, or as a recommendation for the use of such material, product, service or design in the infringement of any patent or other intellectual property right.

\*Niax™ is a trademark of Momentive Performance Materials Inc.

The use of the “™” symbol designates registered or unregistered trademarks of Momentive Performance Materials Inc. or its affiliated companies. Momentive and the Momentive logo are trademarks of Momentive Performance Materials Inc.